

Roscommon LEADER Partnership

2024 Annual Report



Roscommon LEADER Partnership Company is delivering the SICAP programme on behalf of Roscommon Local Community Development Committee, which is a committee of Roscommon County Council.

The Social Inclusion Community Activation Programme (SICAP) is co-funded by the Irish Government, through the Department of Rural and Community Development, and the European Social Fund Plus under the Employment, Inclusion, Skills and Training (EIST) Programme 2021–2027.

Table of Contents

Chairperson Address	3
CEO Statement	4
Company Governance	5
Organisational Chart	9
Our Figures	10
Mo Chairde	11
Boyle Training Options	13
Roscommon Youth Service	14
SICAP	17
Rural Social Scheme	19
Tús	20
Erasmus +/European Funding	22
LEADER 2023 -2027	24
Rural Recreation	27
Financial Statements	28
Funders and Partners	29

Welcome from our Chairperson

In 2024, as Chairperson, I wish to acknowledge the commitment, professionalism, and principled, values-based approach to community work and human rights that has underpinned all of the work of our staff and the Board. It is with continued pride and recognition of the participation of so many stakeholders that I share this Chairperson's Statement with you.



The past year has seen Roscommon LEADER Partnership develop a number of innovative projects across Co. Roscommon and extending its European portfolio of projects. In terms of the development programmes delivered by Roscommon LEADER Partnership (RLP), progress has been consistently excellent. The LEADER and SICAP are now at approximately the halfway point in their current iterations and continue to deliver strongly on their targeted expectations. Both the Tus and Rural Social schemes continue to deliver extraordinary supports to the communities in Co. Roscommon and collectively supported over 400 communities in 2024.

In 2024 we secured the **Community Connections Project** which will play a vital role in strengthening relationships between communities across County Roscommon. The project focuses on building trust, fostering intercultural understanding, and promoting social inclusion through collaboration and shared learning. By creating spaces where people from diverse backgrounds can connect, participate, and contribute, the project helps to reduce isolation and build a stronger sense of belonging.

Looking ahead to 2025, we anticipate deepening our engagement with communities across County Roscommon. With their collaboration and partnership, I am confident that we will continue to build a more inclusive county — one that values diversity, fosters participation, and upholds equality for all.

In our 34-year history, Roscommon LEADER Partnership has continued to advocate, challenge, and promote equality and human rights for Traveller and Roma communities. As Chairperson, I wish to acknowledge and thank the staff for their ongoing advocacy for equality, human rights, and interculturalism — efforts that are deeply valued and respected by the Board.

On behalf of myself and the Board, I extend our sincere thanks to all our staff for their unwavering commitment and hard work. The Board is often in awe of the scope and impact of the projects delivered across the county and region, and of the tangible outcomes achieved for our communities. We also extend our gratitude to all of our funders, whose support makes it possible for Roscommon LEADER Partnership to deliver such a broad and meaningful range of initiatives throughout 2024.

In 2024 some long-serving directors resigned from the Board of Roscommon LEADER Partnership I wish to acknowledge with deep appreciation the contributions of Anton Lennon, Karen Keaveney and Tom Gunning who have retired in 2024 We extend our sincere thanks for their commitment and leadership, wish them every success in their future endeavors.

As Chairperson, I affirm the Board's ongoing commitment to overseeing the work of the company and ensuring that all our methodologies and practices remain rooted in the principles of community development.

CEO Statement



Roscommon LEADER Partnership continues to play a vital role in enhancing community well-being across County Roscommon by managing publicly funded programmes in partnership with Roscommon County Council, government departments, state agencies, and local committees. Additionally, Roscommon LEADER Partnership secured an additional €2.5 million in EU funding for regional development, focusing on priority areas such as the Circular Economy, youth development and social inclusion.

Our work in 2024 focused on several key areas:

Programme Delivery:

We successfully met all performance targets for 2024 across a wide range of community-focused initiatives. These programmes were delivered to the highest professional standard and in full alignment with our commitments.

Community & Rural Development:

Working closely with local partners, we secured and implemented strategic initiatives such as the *Social Inclusion and Community Activation Programme (SICAP) 2024–2028* and the *Local Development Strategy (LDS) 2023–2027*, which underpins the LEADER Programme. These efforts are central to promoting inclusive and sustainable development throughout the county.

Community Impact:

In 2024, we expanded our community presence with new offices in Castlerea—serving as a dedicated Social Inclusion Hub—along with enhanced facilities at The Cube in Roscommon, and offices in Boyle and Ballaghaderreen. These centres provide accessible, locally based services and support for individuals and community groups.

Expanding Our Reach:

We continue to prioritise engagement with our target groups and the most disadvantaged in our communities. Our *Primary Healthcare for Travellers* initiative, *Community Car Scheme*, and the *Empowering Communities Programme* (focused on the Castlehill Estate in Castlerea) are key examples of this work in action.

Overall, Roscommon LEADER Partnership remains dedicated to delivering effective community support and fostering local development through strategic partnerships, innovative programming and an unwavering commitment to meeting the diverse needs of the people we serve. This report provides a high-level summary of the number of groups, individuals, and organisations we worked closely with and supported in 2024. Behind each number lies a personal story, a journey, and an achievement that we are proud to have been part of.

I would like to take this opportunity to thank our colleagues in Roscommon County Council, the Local Community Development Committee, the Local Action Group, the Independent Evaluation Committee, and our other funders for their continued support in ensuring that vital resources are available to communities across County Roscommon.

Finally, I want to extend my sincere gratitude to our staff teams for their resilience, professionalism and commitment in delivering our programmes and continuing to serve the communities of County Roscommon with dedication and care.

Company Governance

Incorporated as Roscommon Integrated Development Company CLG, Roscommon LEADER Partnership (RLP) is a company limited by guarantee and a registered charity (CRO 455844 / Charity Registration 18467). The Board of Directors comprises representatives from local community groups, statutory organizations, and other public bodies.

RLP's Board operates under five core principles of good governance: integrity, responsibility, accountability, transparency and fairness. These principles guide the Board in acting in the best interests of all stakeholders. The Board provides leadership, exercises oversight, ensures transparency in operations, and remains accountable to both members and funders. Directors are expected to uphold the highest standards of integrity and maintain effective communication throughout their work.

Quality and management effectiveness are assessed through:

- The Charities Regulator Authority (CRA) Governance Code
- The Statement of Recommended Practice (SORP) for the preparation and presentation of financial statements

In addition to the 15-member Board of Trustees, the company's operations are supported by a dedicated management structure:

- RLP Board meetings are held bi-monthly, with a total of 5 meetings conducted in 2024.
- The RLP Management Sub-Board, responsible for HR, finance, policy, audit, and governance functions, meets monthly and held 12 meetings in 2024.

The CEO of RLP oversees the day-to-day operations of the organisation, supported by the Operations Manager, Lead SICAP Coordinator, Tús & RSS Coordinator, Chief Financial Officer, and the wider company teams. Our main office is based in Roscommon town, with additional offices in Arigna, Castlerea, Boyle and Ballaghaderreen, and an outreach office located in Monksland.

RLP continued to strengthen its governance and administrative practices during the year, introducing several new policies and updating staff contracts. The organisation remains fully compliant with its statutory obligations, including reporting to the Companies Registration Office, the Charities Regulator, Revenue, and meeting evolving Employment Law and Health & Safety requirements.

RLP's strong administration team has adapted effectively to changes in procedures, processes, and systems. They play a vital role in supporting all programmes and ensuring the organisation meets its financial and operational responsibilities to funders, clients, and collaborative partners. The team also provides timely and efficient reporting to both the Board and funders.

During the year, RLP underwent several funder inspections, all of which resulted in only minor findings that were promptly addressed.

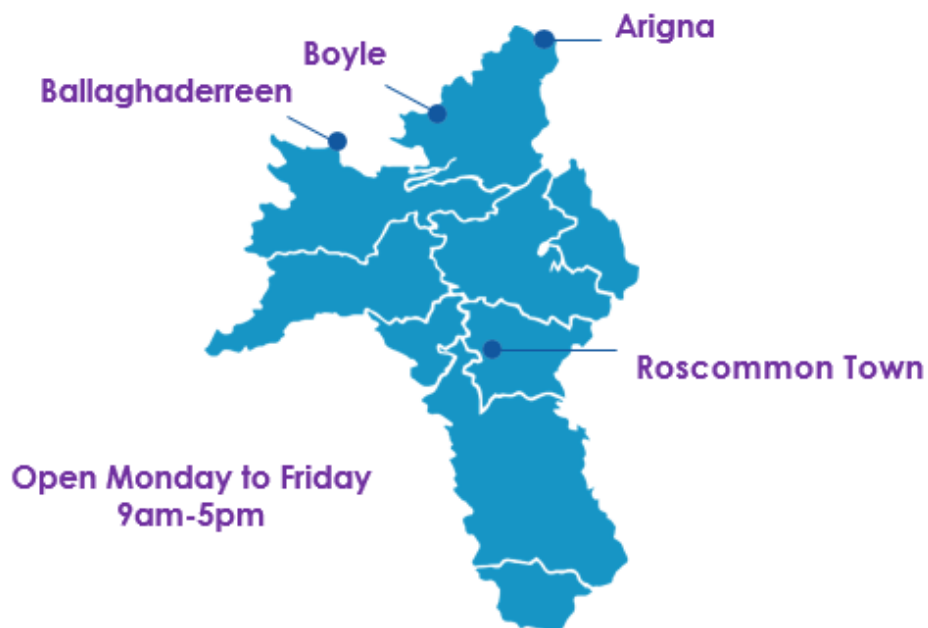
Overview

Roscommon LEADER Partnership (RLP) is a collaborative organisation comprising agencies and groups from the community, statutory, and private sectors. Established as an Integrated Development Company and registered charity, RLP is funded by multiple government departments and agencies to deliver a wide range of programmes and supports to individuals, communities, and businesses across County Roscommon.

The company was formed in 2008 through the amalgamation of three organisations, with its roots tracing back to the implementation of the LEADER programme in 1991 and the Local Development programme in 1995. RLP is governed by an independent Board of voluntary Directors, with sub-committees in place to oversee specific programmes and key governance areas.

As of 31 December 2024, Roscommon LEADER Partnerships Board membership was comprised as follows:

Trustee	Sector Represented
Micheal Frain	Community - Ballaghaderreen
Seamus Conway	National Social Partner - Trade Union
Brian Nerney	National Social Partner - IBEC
Niall Rogers	Community - Roscommon
Marianne Fallon	Social Inclusion - Brothers of Charity
Fiona Ni Chuinn	County Managers nominee
Hamida Jomah	Social Inclusion
Michael Conroy/James Kelly	State Agency - Teagasc
Stephanie O'Connor Shaw	State Agency - GRETB
Paraic Noone	Social Inclusion - Keadue Social Services
John Hanley	State Agency - IFA
Ghassan Shamet	Social Inclusion
Turloch Egan	Community - South Roscommon
Mary Margaret McDonagh	Social Inclusion



Systems

RLP manages its day-to-day accounting using the SAGE accounting system and processes employee payroll through Collsoft Payroll. Reporting, expenditures, Key Performance Indicators (KPIs), and other programme activities are tracked and monitored via the various CRM systems provided by our programme funders.

Additionally, staff training and development programmes in 2024 are outlined below in summary:

Staff training and development in 2024

Fire Awareness Training
Manual Handling
Children First Training

Procedures & Policies

In October 2024, the Board approved updates to RLP's Procedures Manual, ensuring that the organisation's operations and policies remain aligned with best practices and current regulatory standards. The Employee Handbook was also revised in December 2024 to incorporate the latest updates to company procedures and guidelines.

Risk assessments continue to play a vital role in the company's operations. These were reviewed and updated in 2024 to ensure that all potential risks are effectively identified, managed, and mitigated. All assessments are securely retained for ongoing reference and compliance purposes.

RLP is committed to ensuring that all new policies and procedures are developed in full compliance with GDPR principles, with a strong emphasis on safeguarding the privacy and protection of personal data across all areas of operation.

Other policies, which were updated in 2024:

- RLP Child Safeguarding Policy and training for DLP's was carried out in 2024

Principal Risks Identified

RLP's primary source of income comes from funding provided by government departments, local authorities, and semi-state organisations. Like other organisations reliant on public funding, RLP is influenced by government budgetary constraints and wider economic conditions.

To manage these risks, the Board of Directors has implemented robust measures to monitor and mitigate potential financial challenges. A Risk Register is maintained to track identified risks and support proactive management of emerging issues.

In addition, the internal administration team conducts an annual audit to assess compliance with the Finance and Administration Procedures Document. This process ensures adherence to established policies and procedures, with findings presented to the Board for review and oversight.

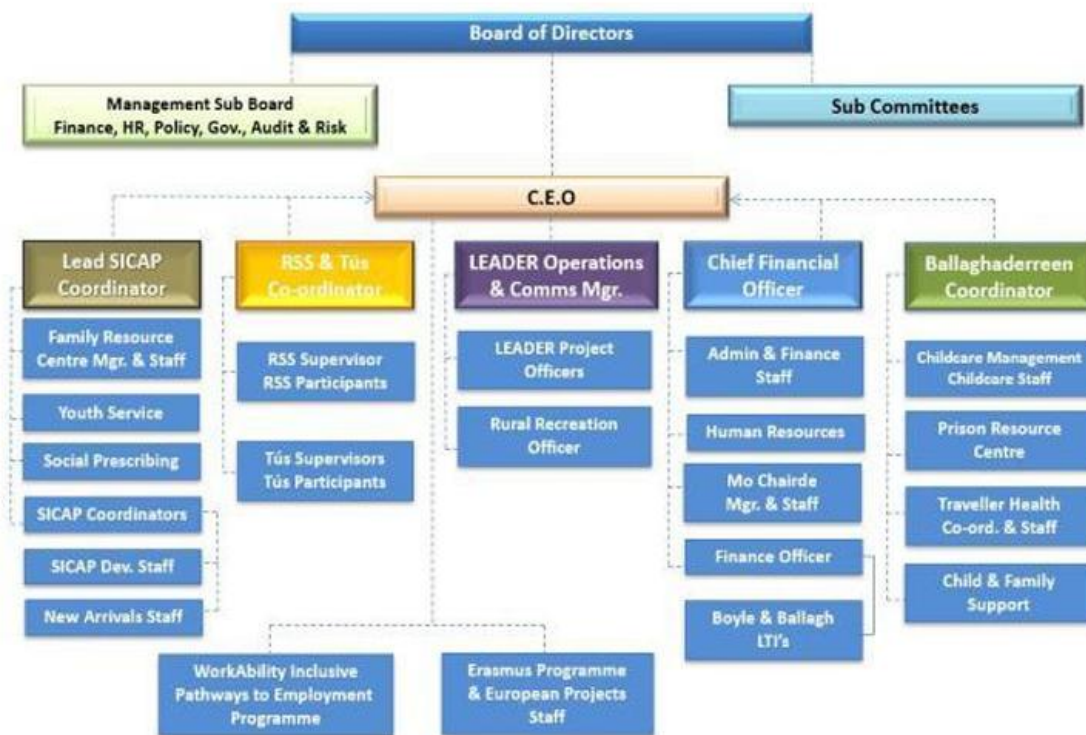
Looking ahead to 2025, particular focus will be placed on managing risks associated with the tendering process. As this area is critical to the organisation's sustainability, the Directors are committed to ensuring that all tendering activities are conducted in a transparent, competitive and strategically aligned manner.

Charitable Purpose

Charitable Objects

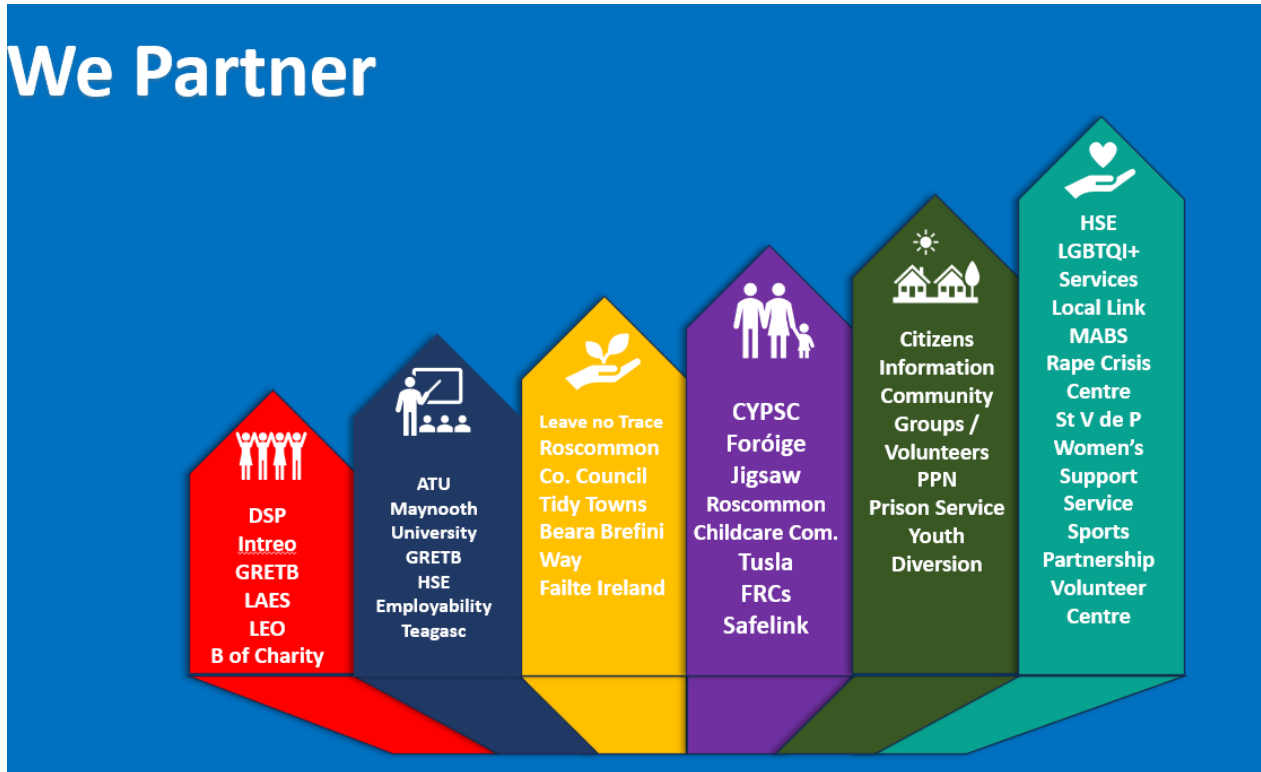
The main object of the Company is to promote, support, assist and engage in (a) social development, (b) enterprise development to facilitate rural and urban regeneration or (c) community development, designed to benefit and promote the welfare of local communities or to deal with the causes and consequences of social and economic disadvantage or poverty.

Organisational Chart as of 31.12.2024

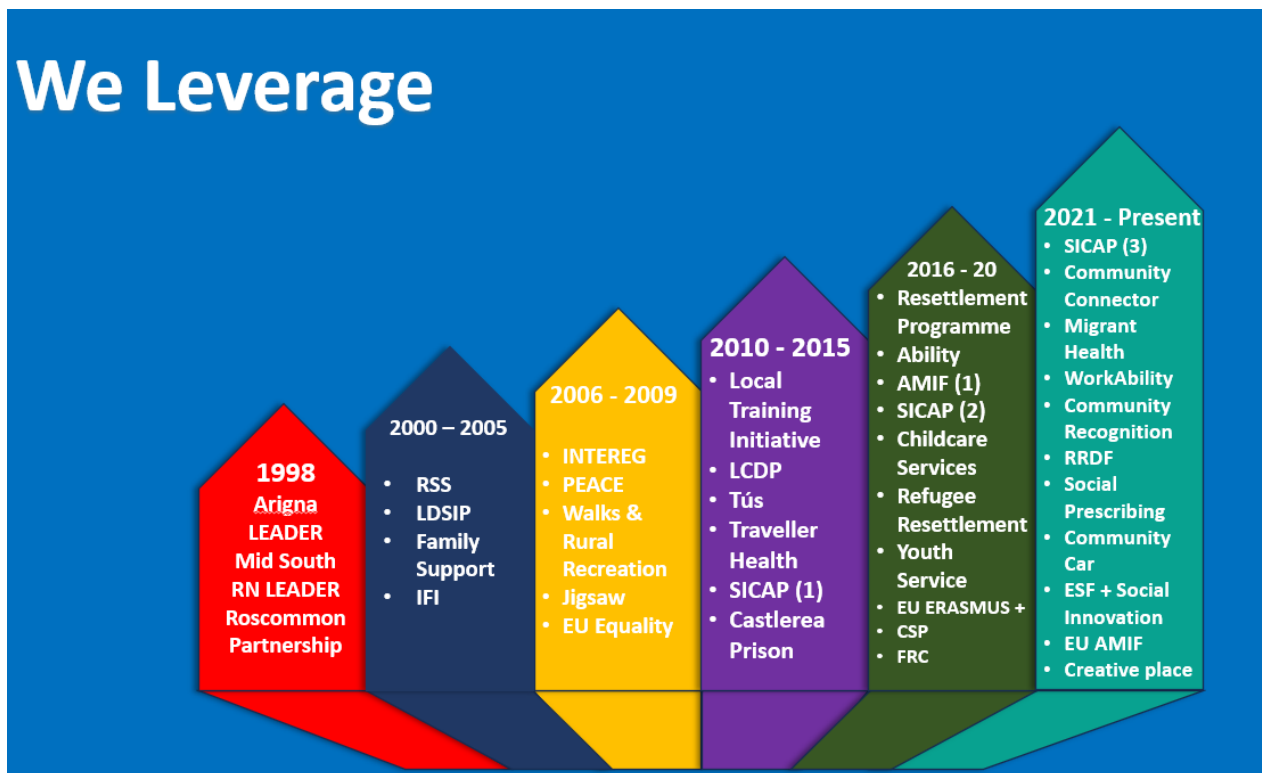


Our Figures -

We Partner



We Leverage



Mo Chairde, Keadue

Mo Chairde had a busy and successful year 2024, with all of our services running smoothly and continuing to grow in response to community needs.

Meals on Wheels

Our Meals on Wheels service remains a cornerstone of support for older people living at home. Over the past 12 months, we delivered **14,088 dinners to 113 clients**, ensuring that vulnerable individuals across our area received nutritious meals and regular contact.

Day Centre

Our Day Centre has been open three days a week, providing both social connection and essential services. In 2024, we served **1,561 dine-in meals** and offered a wide range of activities for day clients and our Men's Shed group.

- Demand continued to grow, and we had a waiting list of seven people for our bus service. While space restrictions prevent us from accommodating them at present, three new clients have joined this year with their carers managing transport.
- We were honoured to welcome Maria Walsh MEP, who spent time engaging with clients and participating in activities.
- To further enhance social inclusion, we organised eight day trips, which are hugely popular and provide clients with a much-valued day out.

Grant Funding & Development

We were successful in seven of our eight grant applications in 2024. These grants enabled us to purchase new equipment and deliver weekly exercise sessions alongside creative arts and crafts activities, supporting both physical and mental wellbeing.

- In July, we were notified that our Q3/23 **Pobal application** was successful, **securing funding for an additional staff member**.
- In September, we received approval from **CLÁR** for funding towards a new delivery van, which will greatly strengthen our capacity.

Fundraising & Community Support

Between January and September, Mo Chairde raised **€8,900** through fundraising

Our commitment to community partnership remained strong. Highlights include:

- Supporting **Pobal's Peer-Led Training Events**: in September, our manager hosted the first online session, where 80 Meals on Wheels providers gained valuable insights and shared best practice.

Governance & Quality Standards

- An **unannounced Environmental Health visit** in July resulted in a fully satisfactory outcome. A subsequent food sampling visit also received highly positive feedback.

Summary

2024 was a year of growth, achievement, and positive impact. From delivering thousands of meals to expanding creative and wellbeing supports, Mo Chairde continues to play a vital role in enabling older people to live independently in their homes and communities.



Boyle Training Options – First Graduation Celebration

On Thursday, 23rd January 2025, Boyle Training Options proudly hosted its first-ever graduation ceremony to celebrate the achievements of its students from the 2024 programme year.

The Local Training Initiative (LTI) in Boyle, known as Boyle Training Options, is a community-based training programme delivered through a collaboration between Roscommon LEADER Partnership (RLP) and the Galway Roscommon Education and Training Board (GRETB).

Established in 2019, Boyle Training Options was developed as an extension of the highly successful Ballaghaderreen LTI, which has been running since 2017. The programme provides participants with the opportunity to gain new skills, build confidence, and progress into further education or employment.

Celebrating Success

The achievements celebrated on Thursday evening were a true testament to the dedication and hard work of our students, the commitment of our staff, and the strong collaboration between all partners involved in this initiative.

Boyle Training Options extended heartfelt thanks to all the local employers who supported our learners during their work experience placements.

The Local Training Initiative delivers QQI-accredited courses in Business Administration and ICT Skills, offering participants practical training and recognised qualifications to enhance their employment opportunities. The course operates on a continuous intake basis, ensuring accessibility for learners throughout the year.



Roscommon Youth Service 2

Throughout 2024, Roscommon Youth Service 2 provided a wide range of opportunities for young people across the county, supporting their personal growth, wellbeing, and inclusion.

Local Youth Groups

We facilitated youth sessions in Elphin, Strokestown, Ballyforan, Monksland, and with young people with disabilities in Roscommon. These groups ranged from Youth Cafés to Activity Groups, offering safe, supportive, and engaging spaces.

Key outcomes for participants included:

- **Skill Development** – communication, teamwork, decision-making, and leadership.
- **Peer-to-Peer Learning** – sharing experiences and strengthening confidence.
- **Trusted Adult Support** – access to a safe space with positive role models and guidance.

Seasonal Programmes

To ensure consistent support and social outlets during school holidays, we delivered Easter, Summer, and Halloween Programmes. These gave young people structured activities, creative opportunities, and vital social connections during times that can feel isolating.

Residential, Farm Visit & Local Trips

A highlight of the year was the Residential Programme for young people aged 13–17 years, which included a farm visit. This provided participants from diverse backgrounds the chance to experience rural life on a working farm while:

- Building friendships with peers beyond their own communities.
- Strengthening personal and social development.
- Gaining insights into agriculture, sustainability, and community living.

In addition, young people took part in day trips, including visits to the Zoo and Lilliput Adventure Centre. These outings encouraged independence, confidence-building, and the opportunity to try new activities while strengthening relationships with peers and staff.

Erasmus Project – Greece Exchange

In 2024, we also completed our final Erasmus+ exchange project, bringing 10 young people (including some with intercultural disabilities) to Greece, alongside partners from Spain and Greece.

Aim of the Project:

- To raise awareness of educational, training, and employment opportunities.
- To empower young people and encourage active participation in learning and work.
- To break down prejudices and stereotypes, particularly around disability.
- To share insights with peers at home, ensuring a ripple effect of knowledge and opportunity.

Overall Objective:

Through carefully planned activities, participants gained knowledge and practical skills to help identify educational and training opportunities linked to their employment goals.

Benefits for Participants:

- The opportunity to travel abroad independently of their families, building resilience and life experience.
- Increased confidence through navigating new environments and cultures.
- A chance to see the world in a new light, broadening horizons and perspectives.
- Understanding that young people across the world share similar challenges and aspirations, fostering empathy and solidarity.
- Improvements in social and developmental skills, including communication, adaptability, and problem-solving.
- Strengthened self-confidence, European identity, and sense of belonging.

Lasting Impact

Across all our programmes in 2024, Roscommon Youth Service 2 helped young people to:

- Build confidence, resilience, and independence.
- Develop stronger social, developmental, and practical skills.
- Form lasting friendships and peer networks.
- Access safe and inclusive environments where their voices are heard and valued.

We remain committed to providing supportive and innovative programmes that give young people the tools they need to thrive.



Social Inclusion Community Activation Programme (SICAP)

What is SICAP

The Social Inclusion and Community Activation Programme (SICAP) 2024-2028 is the successor to the 2018-2023 version. Its core purpose is to tackle poverty, social exclusion, and inequality at the local level.

It is co-funded by the Government of Ireland (Department of Rural and Community Development and the Gaeltacht) and the European Union via the European Social Fund Plus under the Employment, Inclusion, Skills and Training (EIST) Programme 2021-2027.



Management & Delivery in Roscommon

Roscommon LEADER Partnership (RLP) is the Programme Implementer delivering SICAP on behalf of Roscommon Local Community Development Committee (LCD C), which is part of Roscommon County Council.

The programme uses a community development approach, engaging with marginalised individuals, community organisations, and public sector agencies to provide supports that are tailored to local needs.

Key Developments & Highlights in 2024

- Launch of SICAP 2024-2028 period; setting up of targets and adapting existing services to the new programme framework.
- Ongoing support to new communities, including refugees, through dedicated supports and intercultural workers.
- Both headline KPIs exceeded.
- High uptake of accredited and industry-certified training.
- Strong participation in community-based activities.
- Continued support for social enterprises and local community groups through grant aid.

Challenges & Considerations

- Because SICAP targets the most marginalised, many beneficiaries face multiple, overlapping barriers (e.g. education, income, social isolation) which require more intensive, tailored supports.
- Monitoring, performance measurement & data gathering will be important under the new 2024-2028 contract to ensure outcomes are met.
- Ensuring awareness of SICAP among target groups in more remote or isolated parts of the county may continue to be a challenge.

SICAP Highlights 2024



Join us for a Free Fun Festival Event for All Ages
WHEN
 Thursday, June 20th
 from 3- 5.30 pm
 (World Refugee Day)

WHERE
 Ballaghaderreen Family Resource Centre,
 New Street, F45 EK13
 Free transport available

This cross-community event, open to all, will feature a range of activities designed to foster community bonds and celebrate cultural diversity. The event will include collaborative story-telling sessions where groups build stories using multiple languages, promoting language learning and cultural exchange.

Food and Culture

- Bread is a universal food. Explore breads from across the globe and a bread-making ceremony
- Enjoy free food and drinks for all

Creative and Music Workshops

- Share Your Journey (Visual Storytelling)
- Henna Painting
- Global music and sounds
- Come in your cultural dress

Wellbeing Workshops

- Yoga and Mindfulness
- Sow It Grow It – plant a seed and share your story

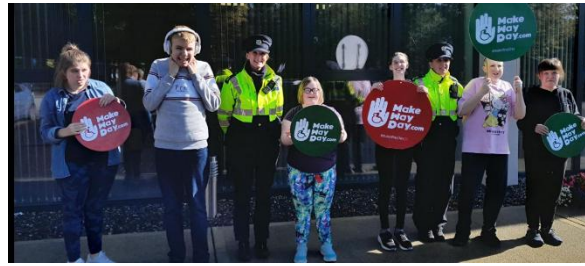
Launch of the ACTIN SOLIDARITY CAFE

- A new informal opportunity to meet up regularly for activities and learning
- Help us plan how the new Cafe can meet your needs.

Children's Activities

- Face Painting
- Play and Fun
- Ice Creams

www.actintegration.eu



Roscommon Pride
 Always Here, Always Proud

Lesbian Stories
Past and Present

Benny's Deli, Castlereagh
Friday July 26th, 7pm

Pre Registration Essential

Community Hub
 Let's Shape Our Community Space Together

- Join us for an opportunity to meet with different members in your local community
- Share your ideas, interest and aspiration's with the group
- Together let's explore opportunities to collaborate on different projects and activities for the space
- Enjoy some refreshments as we plan to create our community space together

Elphin Street,
 Boyle,
 Co Roscommon.
 F52 AY69

11am-1pm,
 Wednesday the 5th
 of June

Programme Reach & Performance

- 57 Community Organisations engaged – Local Community Groups, Social Enterprises and Network Groups
- 370 individuals participated in courses including industry certified and accredited courses. Courses supported confidence-building, self-efficacy, literacy/numeracy, and work readiness.
- 21 people progressed into employment
- 81 community events organised and attended with 13,000 attendees
- Children and Family Support – supports included Family wellbeing, access to education and training and afterschool provision.
- Ongoing work with new communities (refugees and international protection applicants) and priority groups including long-term unemployed, Travellers, and one-parent families.

Objectives & Target Groups

- **Primary Programme Goals:**
 1. Contribute to building more sustainable, inclusive and empowered communities.
 2. Empower individuals who are disadvantaged to improve the quality of their lives, including progress in education, training, employment, self-employment, soft skills, and wellbeing.
- **Target groups include:**
 - People living in disadvantaged communities
 - Persons affected by educational disadvantage
 - Those from jobless or low-income / precarious households
 - Long-term unemployed
 - People with criminal histories
 - Refugees, International Protection applicants
 - Disabled persons / people with disabilities
 - Heads of one-parent families
 - Travellers, Roma
 - Island residents

The Rural Social Scheme - Empowering Local Communities for 20 years

What is the Rural Social Scheme (RSS)

Twenty years ago in 2004, the Rural Social Scheme (RSS) was launched with a clear and compassionate mission: to support low-income farmers and fisherpersons while strengthening the fabric of rural communities. From its inception, the RSS was designed to deliver both personal and collective value—providing financial stability and fostering community development.

Management & Delivery

The RSS is implemented by Roscommon LEADER Partnership (RLP) on behalf of the Department of Social Protection (DSP). We have a dedicated team of 7 Supervisors, an Administrator and a Co-ordinator providing Leadership & Support.

Key Developments & Hi-lights 2024

The RSS has not only achieved its original goals—it has also played a vital role in promoting social inclusion and addressing rural isolation. It has become a cornerstone of rural life, helping individuals and communities grow stronger together.

In September 2024 we celebrated two decades of RSS supporting farmers and sustaining communities in County Roscommon.

Programme Reach & Performance

The Rural Social Scheme continues to be a vital force in rural Ireland—providing part-time income support while preserving traditions, fostering inclusion, and strengthening the social fabric of our towns and villages.

In 2024 we had **155 participants** actively supporting **112 community and voluntary organisations**. This success is a testament to the dedication of our strong local team.

Beyond its economic impact, RSS has played a vital role in promoting social inclusion and combating rural isolation.

Objective & Targets

The rural social scheme is specifically designed for rural people and its operations and structures operate in a farmer friendly manner. The RSS Participants have a wealth of experience and talents and the scheme operates so that these talents are harnessed for the good of the community in the hope that they can be preserved for future generations, enabling these farmers to maintain and continue their farming activities is vital for ensuring that rural communities remain operational.

Going Forward

Participation has declined since 2019, risking service gaps. In July 2024 the Department of Social Protection published a “Report on the Review of the Rural Social Scheme (RSS)” Out of this came 19 recommendations focusing on sustainability, updated governance, and improved participant supports. We hope that when these recommendations are implemented that it will increase the number of farmers or fisherpersons joining the Rural Social Scheme and as the implementing body RLP can continue to provide a much-needed service to local communities.





Tús Employment Programme

What is Tús

Tús is a job activation programme aimed at supporting the long-term unemployed back into the workforce by providing them with a 12 month work placement (19.5 hours/week) in community based roles. The initiative supports environmental, caring, cultural, and general community services.

Management & Delivery

The Tús Initiative, funded by the Department of Social Protection (DSP) is implemented at local level by Development Companies such as Roscommon LEADER Partnership. Participants must be fully unemployed and typically in receipt of Jobseeker's Allowance for at least 12 months before they are referred to Tús.

Key Developments & Hi-lights 2024

Tús has been described as a key activation programme for long-term unemployed individuals.

Tús enhances communities by the role the participants play in **maintaining public spaces, supporting local events and assisting in community centres**. In Roscommon Tús workers have helped with **trail maintenance, environmental clean-ups, and supporting older people** through local services. Throughout the county Tús workers have been instrumental in **revitalising Tidy Towns efforts**, leading to awards and increased civic pride. Their work includes **landscaping, painting, litter control, and community garden development**. Tús placements have also supported **new communities**, including **Ukrainian refugees**, by helping them integrate through community-based roles and language support.

Many participants have used their Tús placements to **gain confidence, structure, and work experience**, leading to:

- Part-time or full-time employment
- Further education or training
- Volunteering or community leadership roles

Programme Reach & Performance

In 2024 the DSP referred a total of 201 new clients as potential Tús Participants to RLP. 174 of these clients were interviewed 27 chose not to engage. RLP supported **129 Tús participants** in 2024 who in turn assisted **62 community and voluntary organisations**. This success is a testament to the dedication of our strong local team of 4 Supervisors supported by their Co-ordinator.

Objective & Targets

Many participants on Tús report increased self-esteem and motivation after engaging in meaningful community work, such as environmental maintenance, heritage projects, or social care roles.

Tús often acts as a stepping stone to full-time employment. Participants gain valuable experience, references, and sometimes direct job offers from host organisations.

Projects supported by Tús workers have a visible and lasting impact on rural and urban communities.

The type of work carried out that we refer to are:

- Maintaining walking trails,
- Supporting meals-on-wheels,
- Assisting with local festivals/events—have a visible and lasting impact on rural and urban communities.

Participants often gain new skills in administration, landscaping, IT, or caregiving, which they can carry into future roles. We endeavour to assist as many new clients as possible in the coming year to achieve the above benefits that come alongside Participating on Tús in Co. Roscommon.

Going Forward

In recent years the numbers on Tús nationally has dropped due to full employment in the country, however, the people most distanced from the labour market still require supports in order to encourage and prepare them for work readiness. There are a number of improvements that Local Development Companies are calling for to help Tús provide this support:

- Improved referral processes
- Expanded eligibility
- Longer placement durations

We will continue working with as many clients as are referred or who self refer to the Tús Programme to ensure they are supported into employment and benefit from the positive long lasting outcomes that participating on Tús has given to so many since 2011.



Erasmus+/European Funding

What It Is

Roscommon LEADER continues to play a vital role in leveraging European funding streams to deliver innovative projects that strengthen communities, promote inclusion, and advance sustainability. Through multiple funding streams, Roscommon LEADER collaborates with local, national, and international partners to create opportunities for education, skills development, and social integration. These projects are designed to address key challenges in rural and urban areas, including youth engagement, migrant integration, health resilience, and the transition to a circular economy. By fostering collaboration and innovation, Roscommon LEADER ensures that County Roscommon remains at the forefront of European initiatives that improve quality of life and empower communities.

The Number of Current Projects

In 2024, Roscommon LEADER successfully managed three ongoing projects that were initiated in previous years. The ACORN Project, which focused on rural youth engagement and leadership, concluded early in the year after achieving significant milestones. Similarly, the COMMUNITY Project, aimed at strengthening community radio and promoting social inclusion, also reached completion. The third project, DARE, continued through its final implementation phase, culminating in a partner visit to Ireland in September. This visit marked an important step in finalizing resources that support diversity and inclusion within small and medium-sized enterprises (SMEs). These projects collectively demonstrate Roscommon LEADER's commitment to addressing social challenges and creating sustainable solutions for local communities.

The Number of New Projects

2024 was a year of growth and innovation, with the launch of five new projects supported by three additional funding streams. Planet PULSE, funded under Erasmus+, began in May and focuses on climate anxiety education and youth activism & sustainability awareness. C-Sustain, also under Erasmus+, give entrepreneurship training and opportunities to young migrants. The CirculYOUNG Project, funded by ESF+, aims to equip young people not in education, employment or training with employability skills aligned with the circular economy and entrepreneurship. ACTIN, supported by AMIF, advances migrant integration through community-based activities and educational resources. Finally, Resilient Cities, funded by EU4Health, seeks to strengthen health resilience and wellbeing strategies in both urban and rural settings. These projects reflect Roscommon LEADER's ability to diversify its portfolio and address emerging societal needs.

Highlights

Two major projects ACORN and COMMUNITY, were successfully completed in 2024, leaving a lasting impact on communities across Europe. ACORN reached over 100,000 young people and facilitated Roscommon's first-ever Rural Youth Assembly, an event designed and led by young people to give them a voice in shaping rural policy. This assembly will now become an annual event, ensuring that youth perspectives remain central to local development strategies. The COMMUNITY Project achieved remarkable success, with resources downloaded over 47,000 times and reaching more than 100,000 individuals, including migrants, women, adult learners, and marginalized groups. A key highlight was the creation of paid employment opportunities in community radio for participants in Ireland.

The DARE Project also reached a significant milestone during its final partner visit to Ireland in September. The focus was on implementing a training course and an interactive assessment app for SMEs. These tools enable the integration of diversity and inclusion modules into vocational education and training, helping SMEs address labor shortages and improve organizational competencies. The project's digital hub and web-based resources provide flexible solutions that can be adapted to various contexts, ensuring long-term impact.

Benefits, Impact & Reach

The benefits of these projects extend far beyond their immediate objectives. The COMMUNITY Project not only provided educational resources but also created tangible employment opportunities, demonstrating the power of community-driven initiatives. Its resources were downloaded over 47,000 times and reached

more than 100,000 individuals, making a significant contribution to social inclusion and empowerment. Similarly, ACORN engaged over 100,000 young people across Europe and introduced the Rural Youth Assembly that will continue to amplify youth voices in rural development. The DARE Project's innovative approach to diversity and inclusion in SMEs addresses a critical need in the labour market. By providing high-quality teaching resources and digital tools, DARE equips businesses with the skills to create inclusive workplaces, ultimately contributing to economic resilience. The new projects launched in 2024 promise to build on these successes by tackling issues such as sustainability, health resilience, and migrant integration. Collectively, these initiatives enhance Roscommon LEADER's reach and impact, positioning the county as a leader in European-funded innovation and community development.

Summary

2024 was a transformative year for Roscommon LEADER, marked by the successful completion of two major projects, the introduction of five new initiatives, and the expansion into three new funding streams. The impact of these efforts is evident in the thousands of individuals reached, the resources developed, and the opportunities created for youth, migrants, SMEs, and marginalized groups. As Roscommon LEADER continues to innovate and collaborate, its work will remain central to building resilient, inclusive, and sustainable communities across County Roscommon and beyond.



LEADER 2023 – 2027

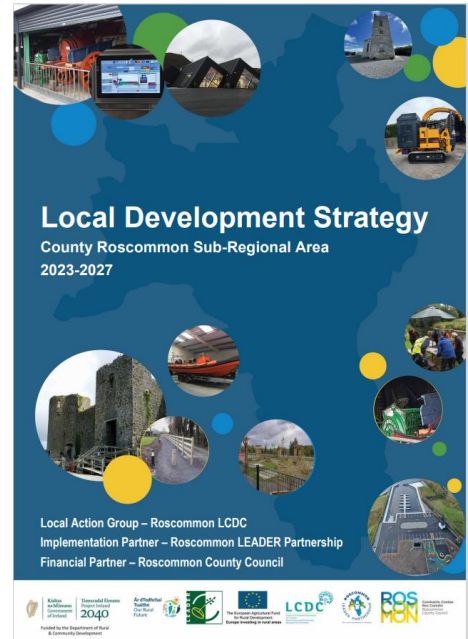
Roscommon Local Community Development Committee (LDCD) is the Local Action Group (LAG) for LEADER 2023-2027 in Co. Roscommon. Roscommon LEADER Partnership is the Implementing Partner for the delivery of the LEADER Programme 2023-2027 in Co. Roscommon. This role includes all interactions with the Promoter(s), up to and including processing of grant claim stage and ongoing monitoring of projects post payment.

April 2024 saw the launch of the Local Development Strategy (LDS) for the County Roscommon Sub-Regional Area. The LDS is the plan for the delivery of LEADER 2023-2027 in Co. Roscommon and was developed following extensive consultation and research, in order to maximise the impact of LEADER 2023-2027 on the area.

The contract for the delivery of LEADER 2023-2027 was signed between the local partners and the Department in May 2027.

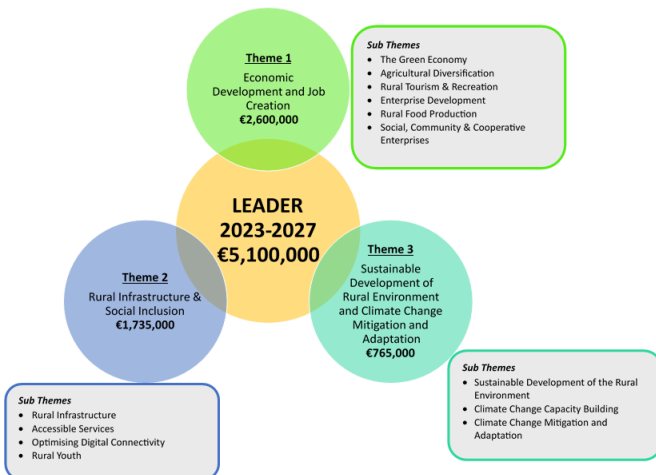
Budget – LEADER 2023-2027

Project Budget	€5,100,000
Admin Budget	€1,700,000
Total Budget	€6,800,000



The programme commenced in May 2024 a series of animation events held. These included 2 webinars held on 23rd and 24 May 2024, followed by a series of clinics across the county.

Promoters were encouraged to complete Expressions of Interest for their LEADER projects under the new programme. Following this, promoters were supported to develop their applications and a total of 19 applications were received in 2024. Fifteen (15) applications were approved for total funding of €986,023.05.



LEADER 2023-2027 funding is available across 3 Themes and 13 Sub-Themes.

Funding is available to Businesses, Individuals, Community Groups, Voluntary Organisations, Women and Youth.

Types of grants available under LEADER 2023-2027 include Capital Grants (for Building Works, Equipment, etc.), Analysis & Development, Marketing Grants, and Training.

Animation of the programme and active engagement with project promoters by LEADER staff at an early stage of project development ensured that individuals and organisations were informed about available funding, resources available and the steps to take to participate.

Targeted communication by the LEADER Team, such as social media posts and local media advertising, ensured that key messages reached the target sectors, prompting engagement and further strengthening the connection between the LEADER programme and the local business and community/voluntary sectors.



Rural Recreation

We have had a busy year in rural recreation. We have been successful in getting the Ballintubber Rambling Loop onto the walks scheme. We have worked with several community groups and farmers/landowners across the county and have applications in for more walks to join the walks scheme in early 2025. We have been working on improving the standards of our walks and have been successful in receiving funding under the walks scheme development fund to help us in our endeavors. Points where we are really trying to focus on are better underfoot condition and making the walks more accessible to visitors.

We have been very fortunate with the Outdoor Recreation Infrastructure Scheme (ORIS), where many of our applications have been successful. We had 2 more successful applications awarded to us for 2024, one will see stone being airlifted onto the Miners Way & Historical Trail and the other is where we will undertake interviews of past miners, and this will be available on QR codes along the trail. Although we had some very successful applications, we also had some that were unsuccessful. We will be working to improve these projects and perhaps reapply again next year or apply under a different funding stream.

We realise that although we know that we have some beautiful walks in our county, we still need to be marketing these walks to get more footfall onto the trails, we have undertaken projects under the ESB windmill fund and creative Ireland fund to get the walks more attractive and create 'social media moments'. With Marketing in mind, we also included marketing elements in applications under the Trail Management Organizations fund, which will help us to promote our walks both online and in newspapers.

Next year looks to be another exciting year for ORIS projects where we already have potentially three Measure 1 (up to 40,000) projects, and for the first time we will be applying for a Measure 2 project (up to 200,000), all pending approval.



Financial Statements - Summary 2024

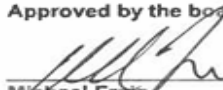
Roscommon Integrated Development Company Ltd by Guarantee


INCOME AND EXPENDITURE ACCOUNT

for the financial year ended 31 December 2024

	Notes	2024 €	2023 €
Income	4	4,881,161	4,607,601
Expenditure		(4,883,453)	(4,630,300)
Deficit for the financial year		(2,292)	(22,699)
Total comprehensive income		(2,292)	(22,699)

Approved by the board on 30 May 2025 and signed on its behalf by:


Michael Frain
Director


Seamus Conway
Director

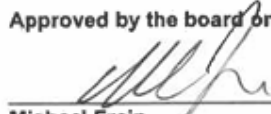
Roscommon Integrated Development Company Ltd by Guarantee


BALANCE SHEET

as at 31 December 2024

	Notes	2024 €	2023 €
Fixed Assets			
Tangible assets	7	314,633	325,283
Current Assets			
Debtors	8	315,011	455,354
Cash and cash equivalents		1,830,038	1,466,169
		2,145,049	1,921,523
Creditors: amounts falling due within one year	10	(2,162,597)	(1,937,488)
Net Current Liabilities		(17,548)	(15,965)
Total Assets less Current Liabilities		297,085	309,318
Government grants	12	(29,823)	(39,764)
Net Assets		267,262	269,554
Reserves			
Income and expenditure account		267,262	269,554
Equity attributable to owners of the company		267,262	269,554

Approved by the board on 30 May 2025 and signed on its behalf by:


Michael Frain
Director


Seamus Conway
Director

Funders & Partners Acknowledgement

On behalf of the RLP team and the communities we serve, we extend our heartfelt gratitude to our funders, Board, partners, and staff for their ongoing support and commitment. Their dedication has been essential to delivering the wide range of initiatives highlighted in this report and to achieving the meaningful, positive outcomes experienced by those we support.

We also wish to acknowledge the invaluable contributions of the statutory bodies at European, national, and local levels, whose continued collaboration has enabled us to expand our activities and strengthen our impact throughout 2024.

Once again, on behalf of everyone at Roscommon LEADER Partnership, we offer our sincere thanks to all who have contributed to our shared success.

