

LOCAL COMMUNITY GROUPS

SICAP aims to strengthen local communities, supporting them to speak for issues that affect them



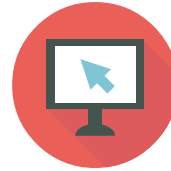
For example, groups working to promote equal access to employment for people with disabilities



SICAP: Planting the seeds for growth

WHERE CAN I FIND OUT MORE?

To empower yourself or your community, find out more at:



www.pobal.ie

LOCAL CONTACT DETAILS

SICAP is co-funded by the Irish government and the European Union under the European Social Fund and includes a special allocation under the Youth Employment Initiative, supported by Pobal.



Comhshaoil, Pobal agus Rialtas Áitiúil
Environment, Community and Local Government



government supporting communities



Ireland's European Structural and Investment Funds Programmes
2014-2020
Co-funded by the Irish Government and the European Union



EUROPEAN UNION
Investing in your future
European Social Fund



Social Inclusion & Community Activation Programme

Providing the Building Blocks for Local and Community Development



Are you looking for a job or want to improve your skills?



Could you benefit from an education or training opportunity?



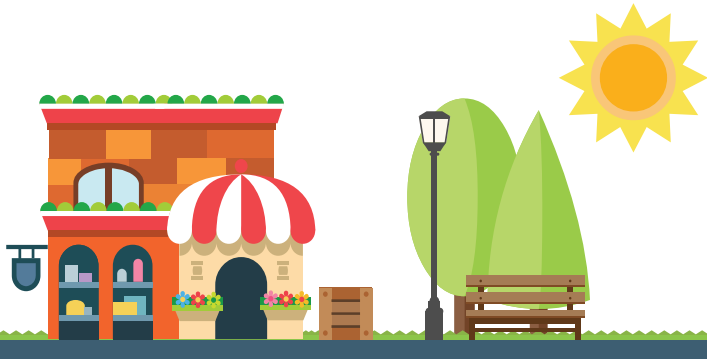
Are you a member of a community group which is working for change locally?



If yes to any of these, SICAP can help you

WHAT IS SICAP?

SICAP is a programme aimed at reducing disadvantage and poverty in Ireland



CAN I USE SICAP?

SICAP is open to people and groups from different walks of life



You can benefit from SICAP if you:

- ➔ Are unemployed
- ➔ Belong to the Traveller or Roma communities
- ➔ Are a one parent family
- ➔ Have a disability
- ➔ Live in an area which is less well off
- ➔ Are a migrant, refugee or asylum seeker
- ➔ You or your family are living on a low income
- ➔ Are a young person looking for a job or training

EDUCATION & TRAINING COURSES



You can access a wide array of training options:



SICAP ALSO OFFERS...



Back to education courses



Pathways to recognised qualifications

HELP TO PREPARE YOU FOR A JOB



A specialist will work with you by:

- Looking at local employment options
- Helping you onto a training course
- Improving your CV
- Developing your interview skills

THE PROGRAMME CAN...



Support, advise and provide access to start up funding if you want to:



Set up your own business



or social enterprise