

Roscommon LEADER Partnership Newsletter



Special points of interest:

- **New Ability Programme 2018 – 2021:** Supporting young people with disabilities
- **LEADER 2014-2020:** Funding available
- **Education and Training Fair Roscommon 2018 :** for school leavers, mature students & the unemployed
- **Roscommon Young Carers Group :** their Summer outing and planned activities for the Autumn
- **Roscommon Volunteer Awards:** Taking place on 6th September
- **EROC Ballaghaderreen – Empowering Refugee Women**
- **The Travellers Journey:** Exhibition in The Country Life Museum
- **LGBT+ Parent Support Group:** Peer Support group meetings and Helpline
- **FREE Agri computer courses:** starting shortly across Co. Roscommon

Head Office : Roscommon West Business Park, Golf Links Road, Roscommon Town

Sub Office: Arigna Enterprise Centre, Arigna, Carrick-on-Shannon.

Sub Office: The Shambles, Market Street, Ballaghaderreen

Sub Office: Curraghboy, Athlone

Tel: 090 663 0252

Email: reception@ridc.ie

Website: www.rosleaderpartnership.ie

VOLUME 5, ISSUE 1

Autumn 2018

RLP is delighted to announce a number of new programmes as follows:

- Ability Programme 2018-2021
- Refugee re-settlement Programme
- A number of Healthy Ireland Programmes
- EROC Centre
- Ballaghaderreen Family Resource Centre
- The Growing Tree

Special point of interest is our new Ability Programme 2018-2021. This programme aims to support young people with disabilities (15-29 years of age) to improve their employability through a range of person-centered supports.

It is proposed that participants on the Ability Programme will be supported with tailored training and career guidance support. Training will include the development of soft skills, confidence, communication, self-awareness, life skills/personal development.

A focus will be placed on work preparation training for young people with disabilities including job search strategies. Existing link-ages on the ground with local employers will be utilised to facilitate supported work sampling, work experience placements, work shadowing, volunteer placement and place and train schemes. We would like to encourage everyone to get involved and for further information please contact Linda Sice at

linda@ridc.ie

LEADER Programme 2014-2020

LEADER is a funding initiative open to all. From community and voluntary groups to private individuals and micro, small and medium enterprises. LEADER can offer grant aid and support to projects aiming to promote the quality of life and economic opportunities for Roscommon dwellers within the framework of the approved Local Development Strategy (LEADER plan).

- For further information on funding and/or to discuss your project idea, please contact the RLP LEADER Team on 090 663 0252 or check out the RLP website at www.rosleaderpartnership.ie



LEADER Funding

Supporting the Delivery of Local Development Actions in Co. Roscommon

IS OPEN TO ALL SUITABLE PROJECTS

NO SPECIFIC OPEN/CLOSING DATES



2018 Funding is FIRST COME – FIRST SERVED Basis

Up to €200,000 could be available for your project

INDIVIDUALS/ENTERPRISES/COMMUNITY GROUPS/ORGANISATIONS CAN APPLY

If you have a project idea or would like more information

Contact - The LEADER Team, Roscommon LEADER Partnership

Call – 090 6630252 or Email – reception@ridc.ie

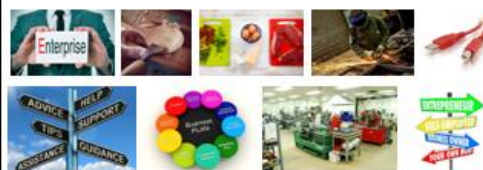


LEADER Funding for Enterprises & Small Businesses

Supporting the Delivery of Local Development Actions in Co. Roscommon

OPEN TO ALL SUITABLE PROJECTS

NO SPECIFIC OPEN/CLOSING DATES



Assistance for Start-up Enterprises and Existing Enterprises including the adoption of new technologies

Micro (1-9 employees), Small (10-50) and/or Medium-sized Enterprises (51-250) can apply

- Development of innovative products and activities
- Adding value to local Food and Agri Food Sector products
- Support for small-scale research, analysis and development
- Support for Tourism, Creative Industries (incl. film and arts based activities), Traditional Manufacturing & Traded Services, Knowledge Sectors, Green Business and Renewable Energy Sector

2018 Funding is FIRST COME – FIRST SERVED Basis

Up to €200,000 could be available for your project

INDIVIDUALS/ SOLE TRADERS/LIMITED COMPANIES CAN APPLY

If you have a project idea or would like more information

Contact - The LEADER Team, Roscommon LEADER Partnership

Call – 090 663 0252 or Email – reception@ridc.ie



Rialtas na hÉireann
Government of Ireland



EUROPEAN UNION
Investing in your future
European Social Fund



An Roinn
Gnóthaí Fostaíochta agus Coimirce Sóisialaí
Department of
Employment Affairs and Social Protection

Roscommon LEADER Partnership Company is delivering the SICAP programme on behalf of Roscommon Local Community Development Committee, which is a committee of Roscommon County Council. The Social Inclusion and Community Activation Programme (SICAP) 2018-2022 is funded by the Irish Government through the Department of Rural and Community Development and co-funded by the European Social Fund under the Programme for Employability, Inclusion and Learning (PEIL) 2014-2020.

Education and Training Fair Roscommon

Roscommon LEADER Partnership Company will host an Education and Training Fair for school leavers, mature students and the unemployed interested in accessing further education or training in County Roscommon and surrounding counties. For further information, email sandra@ridc.ie

On Wednesday, 10th October from 11.00am – 2.30pm
In Kilbride Community Centre,
Four Mile House, Roscommon, F42 N277



Roscommon Volunteer Awards 2018

Roscommon Volunteering Information Service are now accepting nominations for the 2018 Roscommon Volunteer Awards. Volunteers are at the heart of all our communities giving their time freely to help others. They are often in the background and never look for recognition. This is the chance to shine a light on the fantastic work that volunteers and voluntary organisations do across County Roscommon. If you know a Volunteer / Group / Social Enterprise that deserves recognition, nominate them in one of the following categories:

- Older Volunteer
- Group/Organisation
- Social Enterprise
- Volunteer of the Year

Nominations open in early September and close at midnight on October 15th. Nomination forms and criteria are available by calling **Bridie on 094 9862565** or email roscommonvolunteeraward@gmail.com



Keadue Social Services

A massive "Thank You" to everyone who supported us in our recent fundraiser. This was the first year that we participated in The VHI Wome n's Mini Marathon.

To the ladies who braved the 10kms. Pauline, Karen, Josephine, Noreen, Orla, Catherine, Dawn, Carina, Phillipa, Sandra, Margaret, Ann Marie & Caroline, special thanks! We raised **€3,503.51**
 Your continued support is very much appreciated!

For more information on Keadue Social Services, contact Julie on 086 174 9816
Upcoming events

- Positive Age Week October 2018
- Painting Classes
- Art & Crafts

THANK YOU



What about Me?

Are you interested in meeting people in a relaxed space to
 gain skills to enhance your own
Health and Wellbeing?

- Wellness & Mindful Living
- Destress & meet others
- Information on Nutrition and Exercise
- Cooking & Creative Activity
- Information on Employment & Training Supports (optional)



Location:

The Cornerstone Youth Project, The Old Court House,
 Corskeagh, Frenchpark, Co. Roscommon

1 morning per week for 5 weeks 11am to 1pm

Commencing on

Wednesday September 26th to October 24th

To register contact Teresa O'Brien on 086 029 1215 / teresa@ridc.ie

Or Patricia Madden on 086 8194698 / patricia@ridc.ie

Or call to CDP offices, Ballaghaderreen

Eligibility criteria may apply

Funded by the GRETB Community Education Grant and supported by Roscommon LEADER Partnership Company



EROC Ballaghaderreen Empowering Refugee Women

"Nowhere to lay his head"

Refugee families and volunteers travelled to Croke Park to attend the Festival of Families celebrations on 25th August as part of the WMOF 2018.

Mena Doherty and a Syrian Refugee family spoke at a workshop on the 'Meaning of family through difficult times'. This took place in the RDS on 22nd August and 24th August as part of the WMOF.



A Syrian Refugee Family spoke in a workshop on the 'Meaning of Family life'.

Other activities include:

- Within the Arts and Cultural Integration classes refugee women together with volunteers knitted a magnificent WMOF Flag. The flag was on display throughout the exhibition week of celebrations



WMOF Flag



Anne Whelan, Marie and Regina Finn some of the volunteer lady workers on the flag

- In August a large group of Syrian Refugees successfully completed Digital Skills Training
- A recently formed children's choir in Ballaghaderreen comprising the local community and the recently relocated families continue weekly practices

Roscommon Young Carers Group

The Roscommon Young Carers Group outing took place on the 14th July where the kids enjoyed a Bay Sport Water Activity involving Kayaking and water sports. Afterwards Lunch in Roscommon Supermacs.



Upcoming plans...

SEPT - Cinema /Lunch

OCT - North West Activity Centre

NOV - The Springs Hotel Swimming/SPA &Lunch

DEC- ICE Skating in Sligo & Xmas Lunch

These outings are Subject to change in relation to weather or other issues

The Travellers Journey

County Roscommon Traveller Health project were delighted to be part of the organising committee as part of the Western Regional Traveller Health Network for the Travellers 'Journey' exhibition, kindly curated and supported by Turlough Museum for Country Life in Castlebar. The Travellers 'Journey' is a temporary exhibition exploring the rich culture, traditions and crafts of the Traveller community in the west of Ireland. The exhibition aims to showcase and encourage discussion and appreciation of the unique heritage and ethnicity of the Community. It was opened to the public from Wednesday July 11, 2018 and continues until May 2019. We were delighted to attend the official launch by President Michael D Higgins and his wife Sabina Higgins last Tuesday the 10th of July. The Community Health Workers in Roscommon were responsible for designing and making the beautiful quilt in the photos currently on display in Turlough, also artefacts /music and testimonials from the Traveller Community from Roscommon are also in the museum.



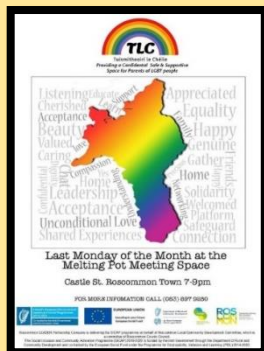
President Michael D Higgins and his wife Sabina Higgins attending the official launch



LGBT+ Parent Support group

Are you the parent of a person who is LGBT + (Lesbian, Gay, Bisexual or Transgender) and would like some support? TLC Tuisitheoiri Le Cheile is a peer support group facilitated by volunteers who provide a confidential space for parents and will be held on the last Monday of each month in the Melting Pot from 7 to 9pm. The next meeting will be on Monday 24th September. Supported by Roscommon LEADER Partnership Company (Social Inclusion Community Action Programme).

The Support **Helpline** is open each Monday from **7pm to 9pm 087 8979280**



FREE Agri. Computer Courses for Farmers and Farm Families

Commencing this September in County Roscommon. Learn the basics of using a computer in a comfortable and friendly environment with like-minded learners.

Topics to be covered include Agfood.ie, DoneDeal, ICBF Animal Search and farming news portals. Agfood.ie allows the farmer substitute their Herd Register (Blue Book) by Registering Calves Online, Creating Compliance Certs for Farm-to-Farm/Feedlot Movements and View your Herd Profile. Sessions are delivered over 3 evenings with each session lasting no longer than 3.5 hours. Laptops/tablets will be provided. Places are limited to 10 participants per course.

For more information, or to book your place, call or text **Christopher** on **086 - 144 8915** or visit our website - <https://rlpdigitalskillsforcitizens.com/>

Online agfood.ie Training

- View Herd Profile
- Birth Registration
- Animal Movements

Banking Online

- Making Payments Online
- Staying Safe Online

For further information email digitalskills@ridc.ie or Christopher on 086 - 1448915

National training being delivered in 2018

LEADER Information Workshops

Are you or your organisation interested in applying for funding under the LEADER Programme 2014-2020? Roscommon LEADER Partnership are holding 3 THEME – Based Information Workshops to provide information on the CO. Roscommon LEADER Programme 2014-2020 at the RLP Office, Roscommon West Business Park, Golf Links Road, Roscommon Town, as follows:

Date	Tuesday 25 th September at 7:30pm	Thursday 27 th September at 7:30pm	Wednesday 26 th September at 7:30pm
Theme	Rural Economic Development	Social Inclusion	Rural Environment
Includes	<ul style="list-style-type: none"> Rural Tourism Enterprise Development Food Social Enterprise Creative Industries Broadband (Training & Capacity Building) Rural Towns 	<ul style="list-style-type: none"> Basic Services – hard to reach communities (Community Facilities, Community Services & Community Events) Rural Youth 	<ul style="list-style-type: none"> Water Resources – lakes and rivers, amenities, etc. Biodiversity Renewable Energy

Each workshop will deal with only one theme. Project promoters are advised to attend the workshop whose theme best suits their project type.

RLP Development Officers, Amanda Mee, Denise McDonnell, Mary Keane and Tomás Beades, will be available at each workshop to discuss your project idea(s). Expression of Interest forms, Step 1 of the overall application process for funding under LEADER, will be available on the night and on request thereafter. The workshops will include details of the LEADER Programme project application, evaluation and approval process. Including details of the new requirement for Targeted Calls for projects.

For further information or to request an expression of interest form, please contact Roscommon LEADER Partnership on 090 663 0252, email reception@ridc.ie, visit the RLP website www.rosleaderpartnership.ie or call to the RLP Office, Roscommon West Business Park, Golf Links Road, Roscommon Town.

Miners Way Arigna.

The Miner's Way, Arigna has recently undergone some extensive groundworks to improve the route on the Seltannasagart (Corry) Mountain. This route shows the superb view of Sliabh an Iarainn overlooking Lough Allen. The path is mainly situated in the townlands of Greaghnaileava More & Beg.



safeTALK
suicide alertness for everyone

Learn four basic steps to recognise when people have thoughts of suicide, and to connect them to suicide first aid resources

suicide alertness for everyone

HALF DAY PROGRAMME



Suitable for everyone who wants to help prevent suicide: front line workers, community workers, Gardaí, clergy, volunteers, teachers and people responding to family and friends...

Who should attend safeTALK?

This training is suitable for everyone who wants to help prevent suicide and is prepared to become suicide alert.

How is safeTALK different from other workshops?

safeTALK helps participants identify people who are at risk, confidently ask them about the topic of suicide, and connect them with resources that can help them stay safe. It is not as advanced as the two-day intervention skills workshop, ASIST.

Steps in suicide prevention training:

STEP 1: General awareness

STEP 2: Alertness skills

STEP 3: Intervention skills

STEP 4: Assessment and management skills



Dáithí Ó Sé and Paul Clabby

Congratulations, Paul!

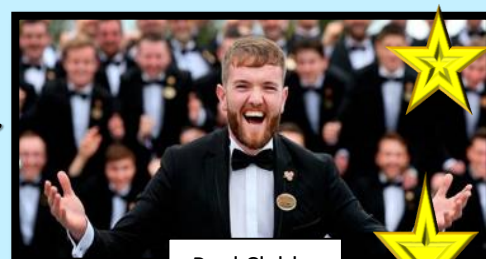
Roscommon LEADER Partnerships own Paul Clabby topped the poll at the 2018 Rose of Tralee International Festival to become the Rose Escort of the Year. The announcement was made by Dáithí Ó Sé live on RTÉ One television in the Festival Dome on Monday nights and presented Paul with a cheque for €1,000.

This year's Rose festival had Rose Escorts from both Ireland and abroad. Paul was paired with the Wicklow Rose, Lorna Mallick, for the first two days of the festival, followed by the New York Rose, Sarah Ward, for the remainder of the event in Tralee.

Paul, from Four Mile House, said: "I'm still in shock, my voice is gone, it's amazing. It has been a fantastic experience, we have been immersed into this bubble down here in Kerry that is all surrounding the Rose of Tralee Festival and I'm delighted I got involved now."

A keen footballer with his native Kilbride, Paul is also a well know DJ around County Roscommon and has been known to take to the floor from time to time. Paul has worked with RLP as a Development Officer on the EU Erasmus Programme for the past 2 years and has represented RLP at many national and international events.

From all at
Roscommon LEADER Partnership



Paul Clabby



www.nosp.ie

www.yourmentalhealth.ie